

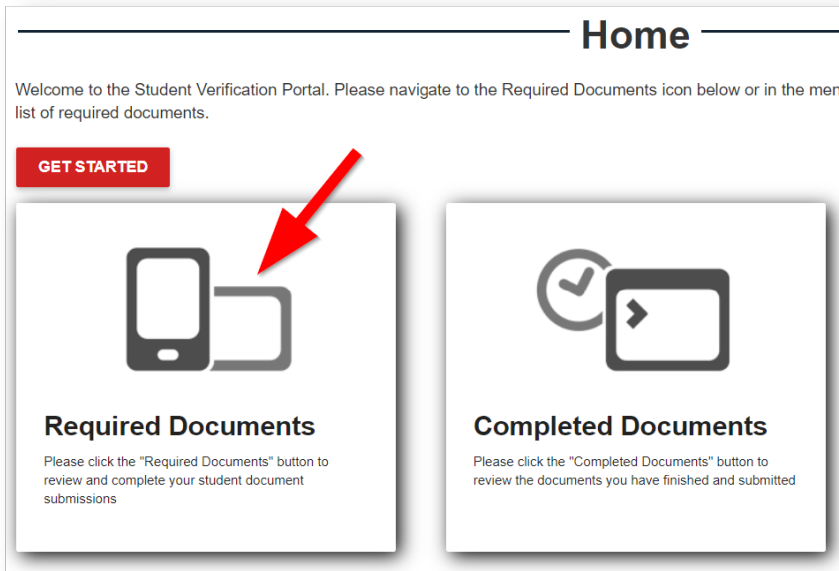
# How to Complete the Verification Worksheet for V4 or V5



You were selected by the Department of Education to provide this information to our office.

The worksheet must be printed and hand-signed. We are not able to accept typed signatures.

It also requires a copy of your government issued ID.

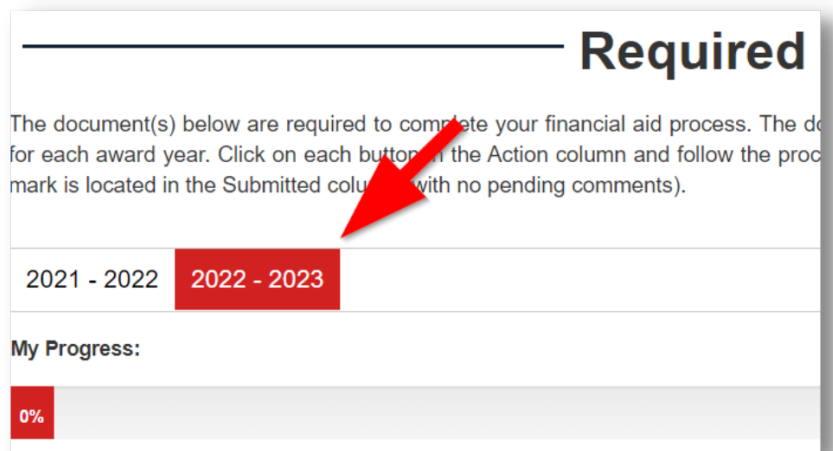


Access your verification portal - <http://www.financialaid.wisc.edu/verificationportal>

Log In with your UW-Madison NetID and password

Click on the **Required Documents** tile

Make sure to click on the correct academic year.



Then, click on **SUBMIT** next to the required document.

All required documents must be submitted and approved before the verification process can be completed.

| Document  | Classification | Action        |
|---|----------------|---------------|
| 2022-2023 2022-2023 Dependent Verification Worksheet V4 | Verification   | <b>SUBMIT</b> |

All required documents must be submitted and approved before the verification process can be completed.

| Document  | Classification | Action        |
|---|----------------|---------------|
| 2022-2023 2022-2023 Dependent Verification Worksheet V5 | Verification   | <b>SUBMIT</b> |

Click the **blue link** to download either the Verification Worksheet V4 or V5 Form.

**Upload a File**

[Download 2022-2023 Dependent Verification Worksheet V4 Form](#)

Please select one of the following:

I am ready to upload

**\*\*Although the worksheet says otherwise, you do not need to** 1) bring the completed form to our office 2) have it completed by a notary public 3) have your parent sign it, or 4) have your spouse sign it.

**Just complete Section A: Student Information, read the Statement of Educational Purpose, and hand sign on the signature line of Page 3\*\***

**Upload a File**

[Download 2022-2023 Dependent Verification Worksheet V5 Form](#)

Please select one of the following:

I am ready to upload

Complete the worksheet and save a copy to your device.

If you need a paper copy mailed to you, please contact our office.

When your worksheet is complete, select that you are ready and click BROWSE to find your completed, hand-signed V4 or V5 worksheet.

Click **UPLOAD** when done.

**Upload a File**

[Download 2022-2023 Dependent Verification Worksheet V5 Form](#)

Please select one of the following:

I am ready to upload

Please select the type of document you are uploading:

2022-2023 Dependent Verification Worksheet V5

Please browse for files to upload:

**BROWSE...**

PDF, JPG and TIFF files are accepted

**UPLOAD** **CANCEL**